



Voltage Stabilizer



We bring stable power everywhere



664-7693 | 0923-7031311



info@megahimel.com



www.megahimel.com



Energy stabilizer is essential to protect electronic equipment especially for those with high accuracy and precision from large voltage fluctuations

Voltage regulation circuit

Control circuit

Servo motor



Machinery



Research Units



Factories & Mines



Laboratories






Schools



Household Appliances

AC Stabilizer



	HTND	HTND2	HTND3	HSVC	HSJW	HSBW	HAVRL
							
	150-250V(0.5-10kVA) 150-290V(15-30kVA)	150-250V(1-10kVA) 150-290V(15-30kVA)	150-250V(1-10kVA) 150-290V(15-30kVA)	High-precision	260-430V(1.5-30kVA) 304-456V(45-60kVA)	304V-456V	85-250V(0.5-10kVA)
PROS	<ul style="list-style-type: none">● Smooth stabilization● Stable and continuous voltage● High accuracy						<ul style="list-style-type: none">● Fast● Cost effective
	<ul style="list-style-type: none">● Lower speed of voltage regulation● Easy to induce contact spark● Easy to wear out the carbon brush						<ul style="list-style-type: none">● Bounced stabilization● Lower accuracy
Servo motor type Stabilizer							Relay type Stabilizer



- High Precision
- Fully Automatic
- Ultra-low Voltage
- High Power
- Wall-Mounting

With the full portfolio, we can bring the stable power to you everywhere



HTND3



HSVC-B



HTND2



HTND



HAVRL



HSJW



HSBW

Single-Phase

Three-Phase



664-7693 | 0923-7031311



info@megahimel.com



www.megahimel.com

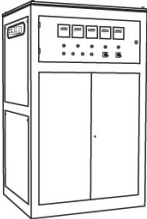


Target Applications



L1 L2 L3 N

HSBW



Large scale equipment

- 304V – 456V Input Voltage
- 10kVA – 2000kVA Power Rating
- COMMERCIAL & INDUSTRIAL Application

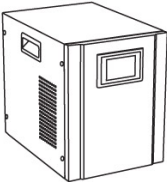
HSJW



Industrial equipment

- 260V – 456V Input Voltage
- 1.5kVA – 60kVA Power Rating
- INDUSTRIAL Application

HTND/HTND2/HTND3



Household appliances & Office equipment

- 150V – 290V Input Voltage
- 0.5kVA – 30kVA Power Rating
- HOME & OFFICE Application



AC Stabilizer Portfolio

CHARACTERISTICS

	HTND	HTND2	HTND3	HSVC-B	HAVRL	HSJW	HSBW
Description	Single phase fully automatic AC voltage stabilizer					Three phase fully automatic AC voltage stabilizer	
Capacity	0.5,1,1.5,2,3,5,7,10,15,20,30kVA	1,1.5,2,3,5,7,10,15,20,30kVA	1,1.5,2,3,5,7,10,15,20,30kVA	3,5,7,10kVA	0.5,1,1.5,2,3,5,7,10kVA	1.5,3,4.5,6,9,15,20,30,45,60kVA	10,15,30,50,100,150,200,250,300,400,500,600,800,1000,1600,2000kVA
Type	Servo motor	Servo motor	Servo motor	Servo motor	Relay type	Servo motor	Servo motor
Standard	EN 61000-6-2, 61000-6-4,61558-1	EN 61000-6-2, 61000-6-4,61558-1	EN 61000-6-2, 61000-6-4,61558-1	EN 61000-6-2, 61000-6-4,61558-1	EN 61000-6-2, 61000-6-4,61558-1	EN 61000-6-2, 61000-6-4,61558-1	EN 61000-6-2, 61000-6-4,61558-1
Certificate	CE	CE	CE	-	-	CE	CE
Overvoltage	√	√	√	√	√	√	√
Temperature rise	※	※	√	√	√	※	※
Overload	※	√	√	√	√	※	※
Under-voltage	※	※	※	※	※	※	√
Short circuit	√	√	√	√	√	√	√
Time delay	※	※	※	※	※	※	※

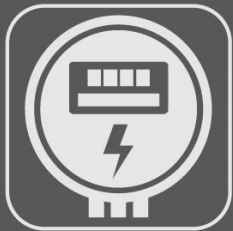
PROTECTION

√ standard function

※ optional function



Himel voltage stabilizer protects your expensive and delicate electronics from large voltage fluctuations, as well as surges and spikes with reliability



RELIABLE

Wide range for stabilizing voltage, used for unstable power grid and protects end equipment with comprehensive functions.



HIGH PRECISION

Actual accuracy around $\pm 2.5\%$



COST EFFECTIVE

Comprehensive protections at a reasonable price

